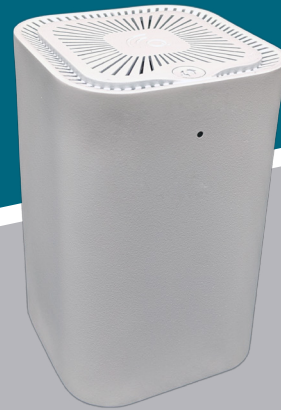




Spartan Essential

802.11ac Wave 2 DBDC Mesh Wi-Fi
AC2000 4x4 + 2x2 MIMO



Overview

Based on reference Quantenna 4x4 802.11ac Wave 2, Spartan Essential design allows equipment manufacturers and Service Providers to address multiple end customer needs with a single compact product for multiple applications:

- Wi-Fi Mesh for Smart Multi-AP network
- Simple Extender to upgrade your existing Gateway's wireless LAN
- Universal Repeater for extension of your existing wireless network



Quantenna introduced a comprehensive list of features in Spartan Essential to address these use cases. This eliminates the need for lengthy customization and feature developments by equipment manufacturers, software integrators and service providers.

Spartan Essential reduces your development cycle and time to market.

Spartan Essential includes:

- SONiQ Software for Mesh networks
- Ready-to-use Graphical User Interface
- Pre-integrated TR-069 Agent for Remote Management and Firmware Upgrade



Thanks to Quantenna unique Wi-Fi performance, Spartan offers more wireless coverage, more wireless coverage, more devices supported, with less Access Points than most Mesh solutions.

Spartan design and manufacturing package is available to Equipment Manufacturers under Licensing agreement. Please contact your Quantenna Sales representative for more information and access to Spartan Essential Reference Design Kit.

Wi-Fi 5GHz Interface

- 5GHz 802.11ac Wave 2 4x4:4 Spatial Streams
- Total conducted output power 27dBm
- 40 / 80 MHz
- MU-MIMO
- Max PHY Rate 1700Mbps

Wi-Fi 2.4GHz Interface

- 2.4GHz 802.11n 2x2: 2 Spatial Streams
- Total conducted output power 23dBm
- 20 / 40 MHz
- Max Phy Rate 300Mbps

Wireless Features

- 802.11a/b/g/n/ac
- 802.11e QoS
- 802.11h DFS and TPC
- 802.11i Security (WPA/WPA2 Personal)
- 802.11k Radio Resource Management
- 802.11r Fast BSS Transitions
- 802.11v Wireless Network Management
- 802.11w Protected Management Frames

Physical Interfaces

- 1 RJ-45 Gigabit Ethernet
- 1 push button for WPS association
- 1 LED 3 colors
- 1 reset pinhole button
- 1 power on/off switch

Operating Conditions

- Operating Temperature: 0° to + 40°C
- Storage Temperature: - 40° to + 60°C
- Relative Humidity: 8% to 95%

Advanced 5GHz Channel Management

- Quantenna Smart Channel Selection (dynamic channel selection at runtime)
- Quantenna SuperDFS for optimized DFS spectrum usage

SONiQ Software for Mesh Wi-Fi

- Automated Role Determination: Extender/ Repeater
- Configuration propagation to all AP belonging to Mesh network
- Client Steering (multiband and multi-AP) for wireless performance enhancement
- Supports Wi-Fi Alliance Agile Multiband™
- Wi-Fi Alliance EasyMesh™

Management

- TR-069 Agent / TR-181 Data model
- Local Secure GUI

Regulatory

Designed for CE and FCC compliance

Product Dimensions

Width: 80mm x Depth: 80mm x Height: 131mm



Contact us

1704 Automation Parkway
San Jose, CA 95131 USA
sales-na@quantenna.com
www.quantenna.com

Quantenna™ and the logo are the trademarks of Quantenna Communications. Any other trademarks or trade names mentioned are the property of their respective owners. Preliminary Specification. Subject to change without notice. Proprietary and Confidential.

© 2019 Quantenna Communications, Inc. All rights reserved.